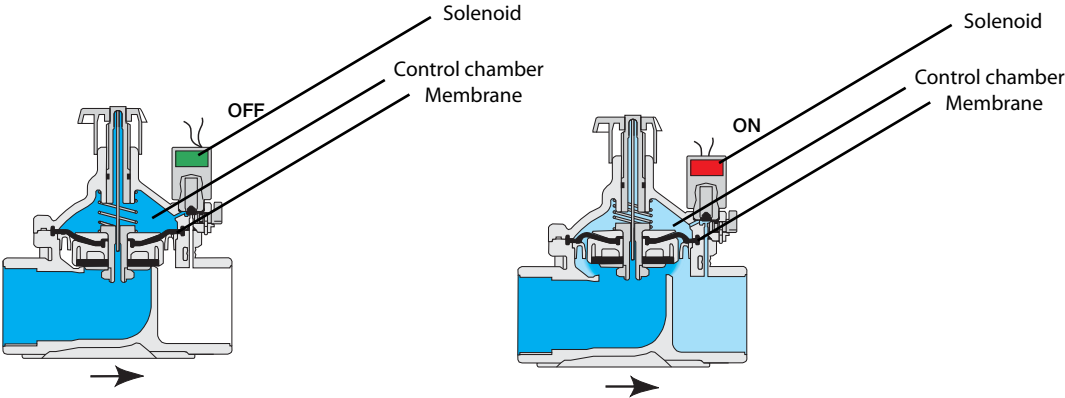


CEPEX ELECTRIC VALVES CPV

CHARACTERISTICS

APPLICATION	Residential, commercial, agriculture
SIZES	¾", 1", 1½", 2", 3" BSP female
OPTIONS	24 VAC / 9 V latch
MINIMUM FLOW	0,5 m³/h
WORKING PRESSURE	0,7 - 10 bar
MATERIAL	Nylon reinforced
CONTROL	Electric - solenoid 2 ways
FLOW CONTROL	YES
OTHER CHARACTERISTICS	Without pipes or external accessories Compact construction Bolt closing cover Self cleaning hole

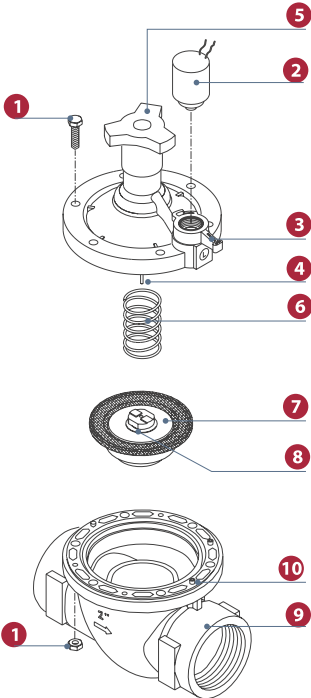
OPERATION



**Closed Position**  
The internal restriction continuously allows line pressure into the control chamber. The solenoid controls outflow from the control chamber. When the solenoid is closed it causes pressure to accumulate in the control chamber, therefore forcing the valve to close.

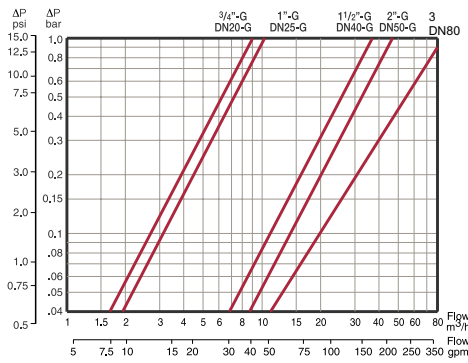
**Open Position**  
**Opening the Solenoid releases more flow from the control chamber than the restriction can allow in.** This causes the accumulated pressure in the control chamber to drop, enabling the line pressure acting on the plug to the valve.

COMPONENTS



COMPONENT		MATERIAL
1	Bolts and nuts	Stainless steel
2	Solenoid	
3	Manual override handle	Nylon reinforced
4	Needle	
5	Flow control	Nylon reinforced
6	Auxiliary closing spring	Stainless steel
7	Diaphragm	NBR
8	Internal restriction	
9	Body	Nylon reinforced
10	Internal control circuit outlet	

## PRESSURE LOSS DIAGRAMM

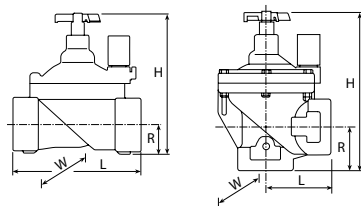


	DN20 - 3/4"	DN25 - 1"	DN40 - 1 1/2"	DN50 - 2"	DN80 - 3"
Kv (m3/h)	9	10,5	37	47	100

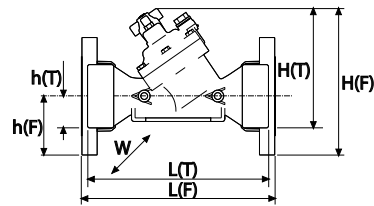
KV value:

Flow V (water flow) in m3/h in a temperature between 5 to 30 °C, through a valve with a pressure loss of  $\Delta p = p_1 - p_2 = 1$  bar

## DIMENSIONS



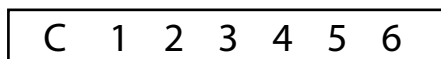
	DN20	DN25	DN40	DN50
L (mm)	110	110	160	170
H (mm)	115	115	180	190
R (mm)	22	22	35	38
W (mm)	78	78	125	125
Weight (kg.)	0,35	0,33	1,0	1,1



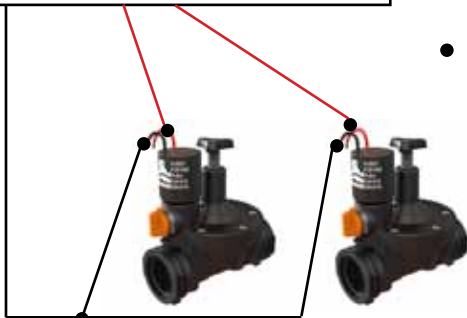
	L (mm)	H (mm)	h (mm)	W (mm)	Weight (kg.)
DN80	298	180	50	190	1,6

## ELECTRICAL CONNECTION

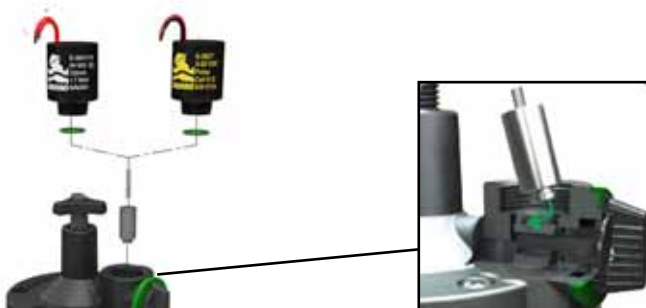
Controller:



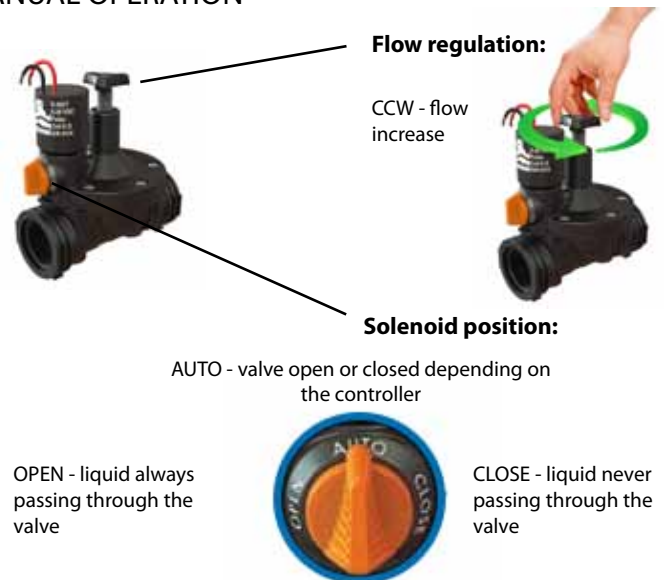
- Sealing wire connectors



## SOLENOID REPLACEMENT



## MANUAL OPERATION



## Spare parts

	CODE
SOLENOID 24 VAC 2 ways NC for valves CPV CEPEX	56699T
SOLENOID 9V latch 2 ways NC for valves CPV CEPEX	56700T